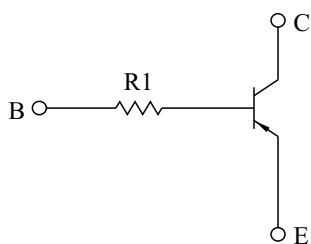


SWITCHING APPLICATION.  
INTERFACE CIRCUIT AND DRIVER CIRCUIT APPLICATION.

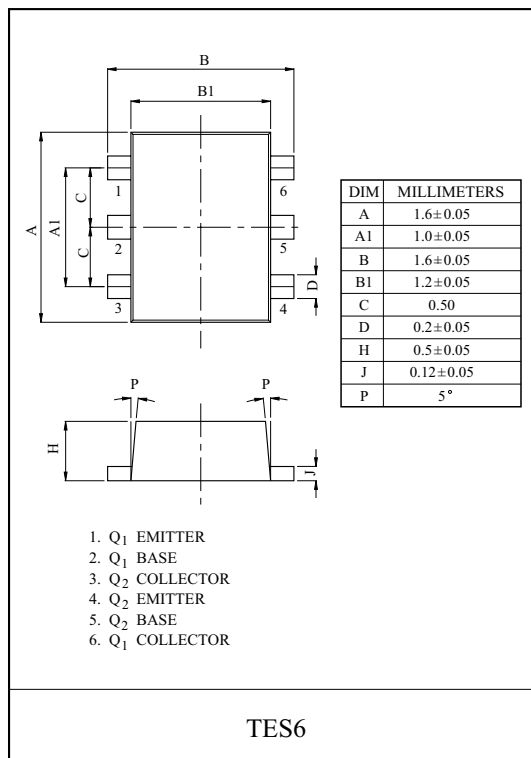
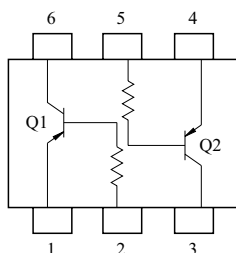
### FEATURES

- With Built-in Bias Resistors.
- Simplify Circuit Design.
- Reduce a Quantity of Parts and Manufacturing Process.
- High Packing Density.

### EQUIVALENT CIRCUIT



### EQUIVALENT CIRCUIT (TOP VIEW)



### MAXIMUM RATING (Ta=25℃)

CHARACTERISTIC	SYMBOL	RATING	UNIT
Collector-Base Voltage	$V_{CBO}$	-50	V
Collector-Emitter Voltage	$V_{CEO}$	-50	V
Emitter-Base Voltage	$V_{EBO}$	-5	V
Collector Current	$I_C$	-100	mA

CHARACTERISTIC	SYMBOL	RATING	UNIT
Collector Power Dissipation	$P_C$ *	200	mW
Junction Temperature	$T_j$	150	℃
Storage TemperatureRange	$T_{stg}$	-55 ~ 150	℃

\* Total Rating.

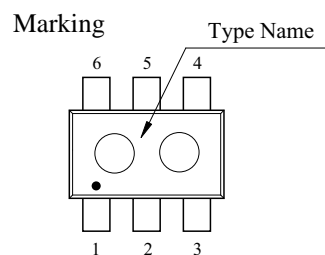
### ELECTRICAL CHARACTERISTICS (Ta=25℃)

CHARACTERISTIC		SYMBOL	TEST CONDITION	MIN.	TYP.	MAX.	UNIT
Collector Cut-off Current		$I_{CBO}$	$V_{CB}=-50V, I_E=0$	-	-	-100	nA
Emitter Cut-off Current		$I_{EBO}$	$V_{EB}=-5V, I_C=0$	-	-	-100	nA
DC Current Gain		$h_{FE}$	$V_{CE}=-5V, I_C=-1mA$	120	-	-	
Collector-Emitter Saturation Voltage		$V_{CE(sat)}$	$I_C=-10mA, I_B=-0.5mA$	-	-0.1	-0.3	V
Transition Frequency		$f_T$ *	$V_{CE}=-10V, I_C=-5mA$	-	250	-	MHz
Input Resistor	KRA760E	$R_i$		-	4.7	-	$k\Omega$
	KRA761E			-	10	-	
	KRA762E			-	100	-	
	KRA763E			-	22	-	
	KRA764E			-	47	-	

Note : \* Characteristic of Transistor Only.

### MARK SPEC

TYPE	KRA760E	KRA761E	KRA762E	KRA763E	KRA764E
MARK	PK	PM	PN	PO	PP

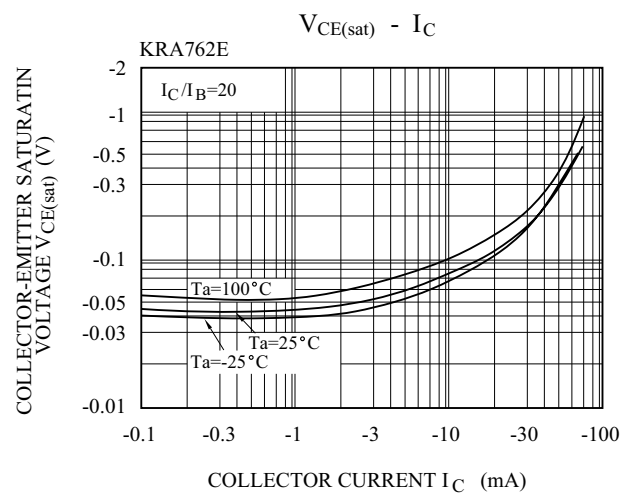
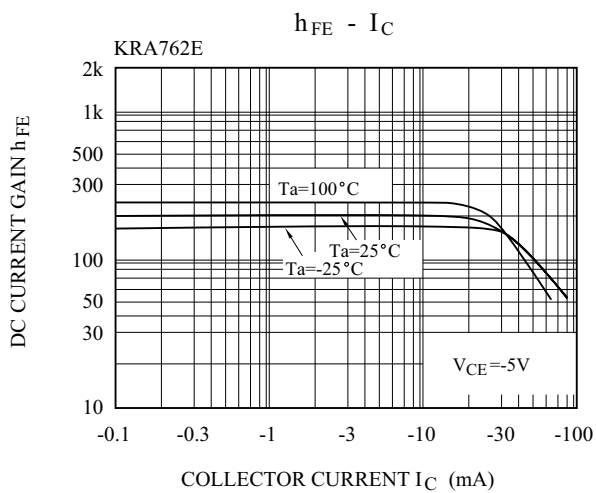
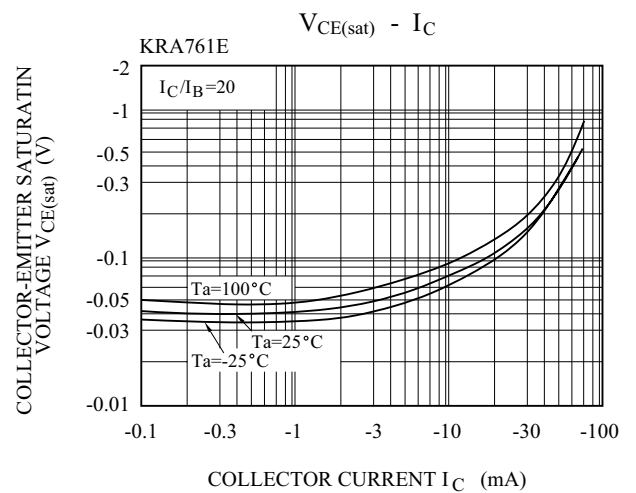
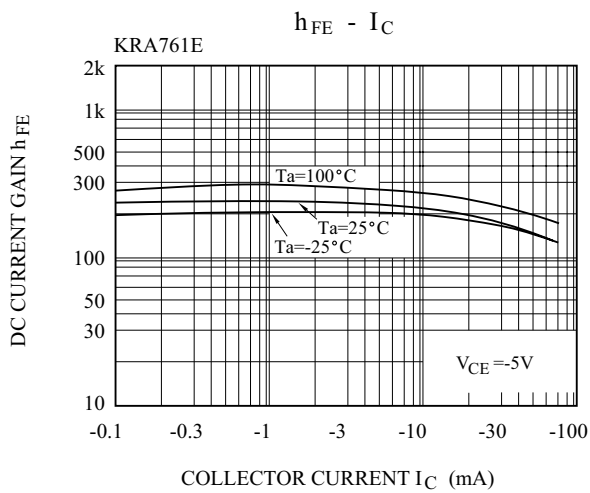
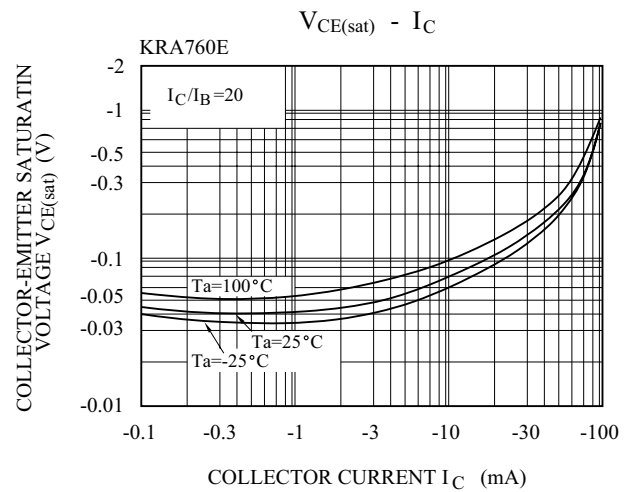
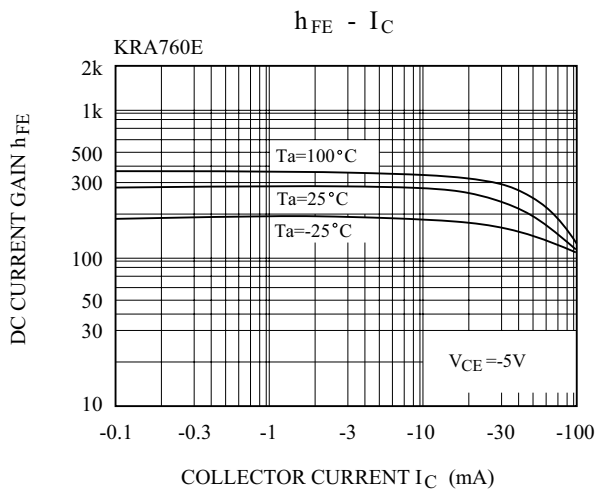


# KRA760E~KRA764E

## ELECTRICAL CHARACTERISTICS (Ta=25 °C)

CHARACTERISTIC			SYMBOL	TEST CONDITION	MIN.	TYP.	MAX.	UNIT
Switching Time	Rise Time	KRA760E	t <sub>r</sub>	V <sub>O</sub> =-5V V <sub>IN</sub> =-5V R <sub>L</sub> =1k Ω	-	0.2	-	μS
		KRA761E			-	0.065	-	
		KRA762E			-	0.4	-	
		KRA763E			-	0.1	-	
		KRA764E			-	0.15	-	
	Storage Time	KRA760E	t <sub>stg</sub>		-	2.0	-	
		KRA761E			-	1.7	-	
		KRA762E			-	3.0	-	
		KRA763E			-	2.0	-	
		KRA764E			-	1.5	-	
	Fall Time	KRA760E	t <sub>f</sub>		-	0.3	-	
		KRA761E			-	0.3	-	
		KRA762E			-	1.7	-	
		KRA763E			-	0.8	-	
		KRA764E			-	1.5	-	

# KRA760E~KRA764E



# KRA760E~KRA764E

